

CROP MARKS

FRONT



REPLACING THE LACE ON YOUR SAEBOSTEP BRACE

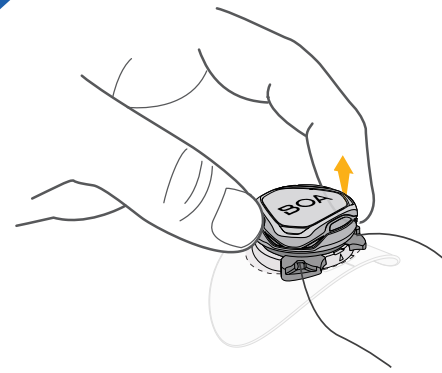
STEP-BY-STEP INSTRUCTIONS

FOLD MARKS

SEE THE EASY-TO-FOLLOW VIDEO:

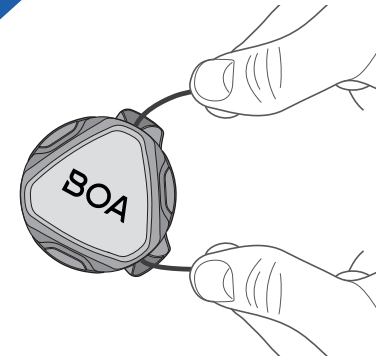
Go to www.saebo.com/lace-replacement for an instructional video and more info.

1



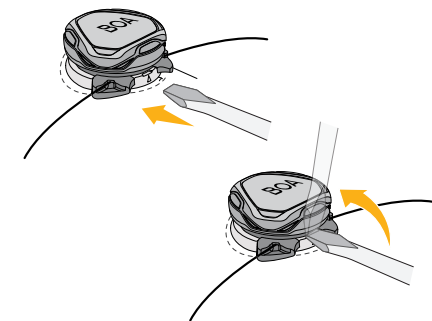
Pull dial outward to disengage spool.

2



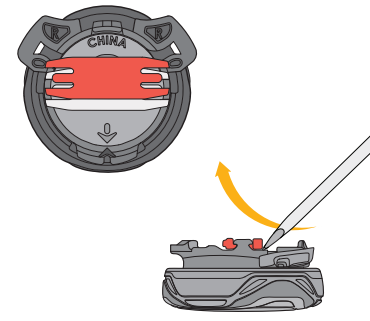
Pull on lace to unwind.

3



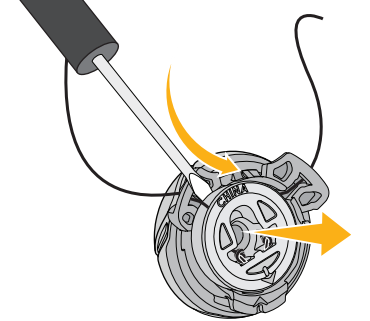
Insert flat tool in between cartridge and base and pry upwards to release cartridge from brace. Cartridge will pop out.

4



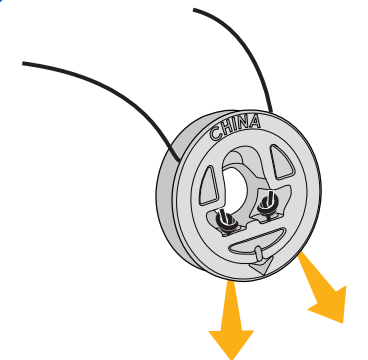
Use flat tool (such as screwdriver) to gently pry red piece out.

5



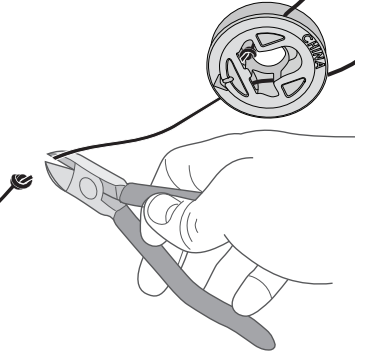
Remove spool from cartridge.

6



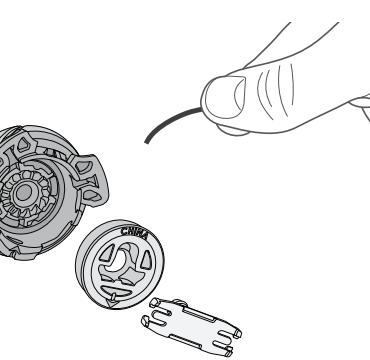
Tease the knots out of the center of the spool.

7



Clip off knots on both ends of lace.

8

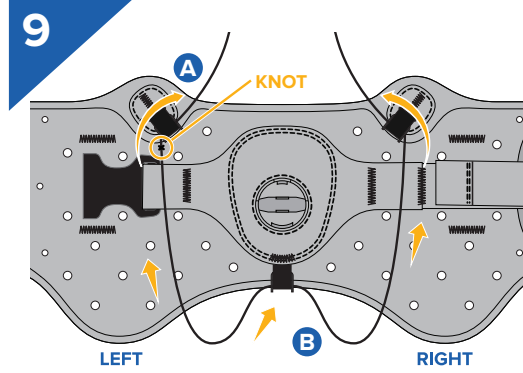


Remove lace from spool, cartridge, and brace. Remove flexible tubing from old lace.

CROP MARKS

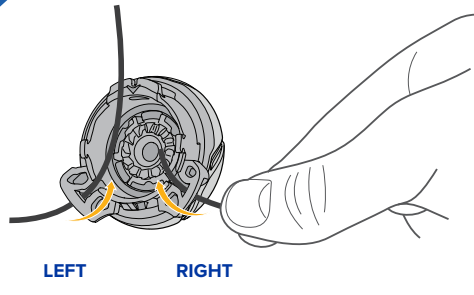
BACK

FOLD MARKS



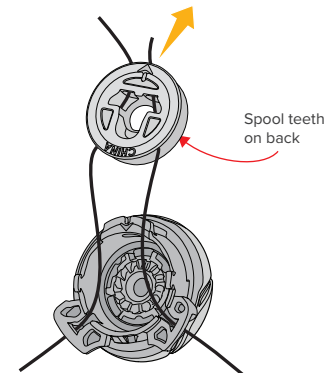
A. Thread knot end of the lace upward through an upper guide.
B. Thread the other end through the lower guide and then up through the opposite upper guide.

9



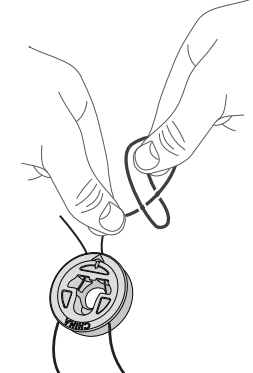
Thread both ends of lace through correct cartridge opening.

10



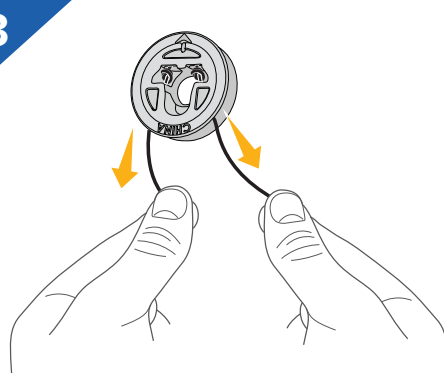
With the spool teeth facing the cartridge, thread both ends of lace through correct openings in spool and out through the side with the arrow.

11



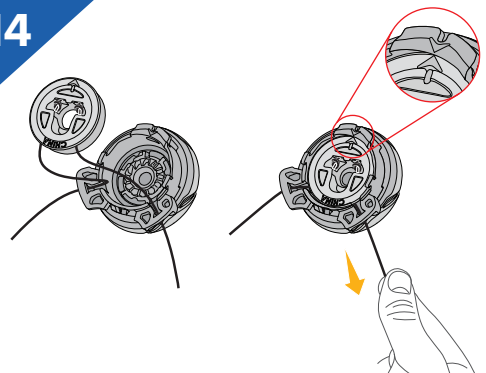
Tie knots on each end of the lace as close to the end as possible. Trim off any excess length exceeding 1/8".

12



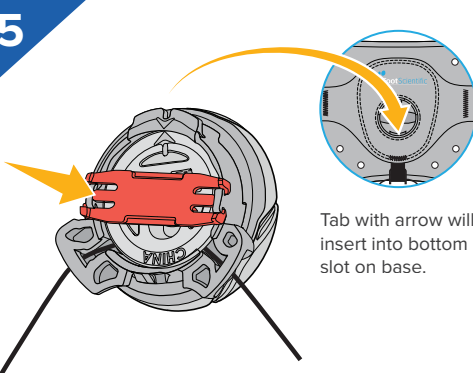
Pull the lace back through the spool so the knots are secured in the middle of the spool. The knots should not come out of the top of the spool.

13



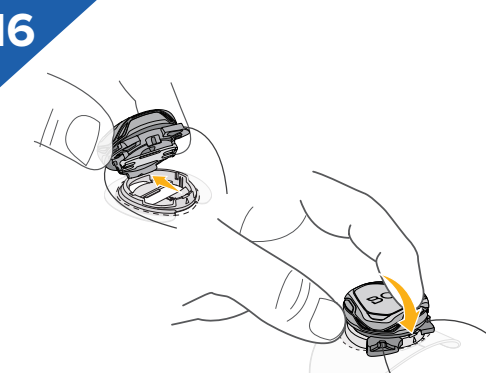
Click the cartridge and spool together so that arrow on the spool and the arrow on the tab of the cartridge are aligned as closely as possible.

14



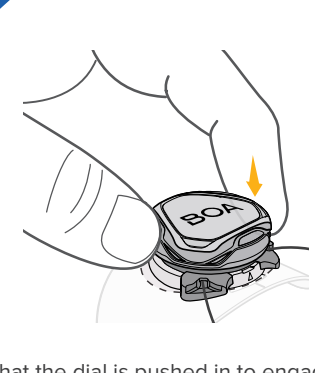
Insert red piece into the middle of the spool horizontally as shown and push it until it clicks and holds the spool in place.

15



Re-insert cartridge into base by putting the bottom tab in first, then clicking the cartridge into place.

16



Ensure that the dial is pushed in to engage the spool, then wind the laces by twisting the dial clockwise.

***LEAVE SLACK WHEN NOT IN USE - NEVER WIND LACE COMPLETELY INTO THE BOA!**

Visit www.saebo.com/lace-replacement for more information.